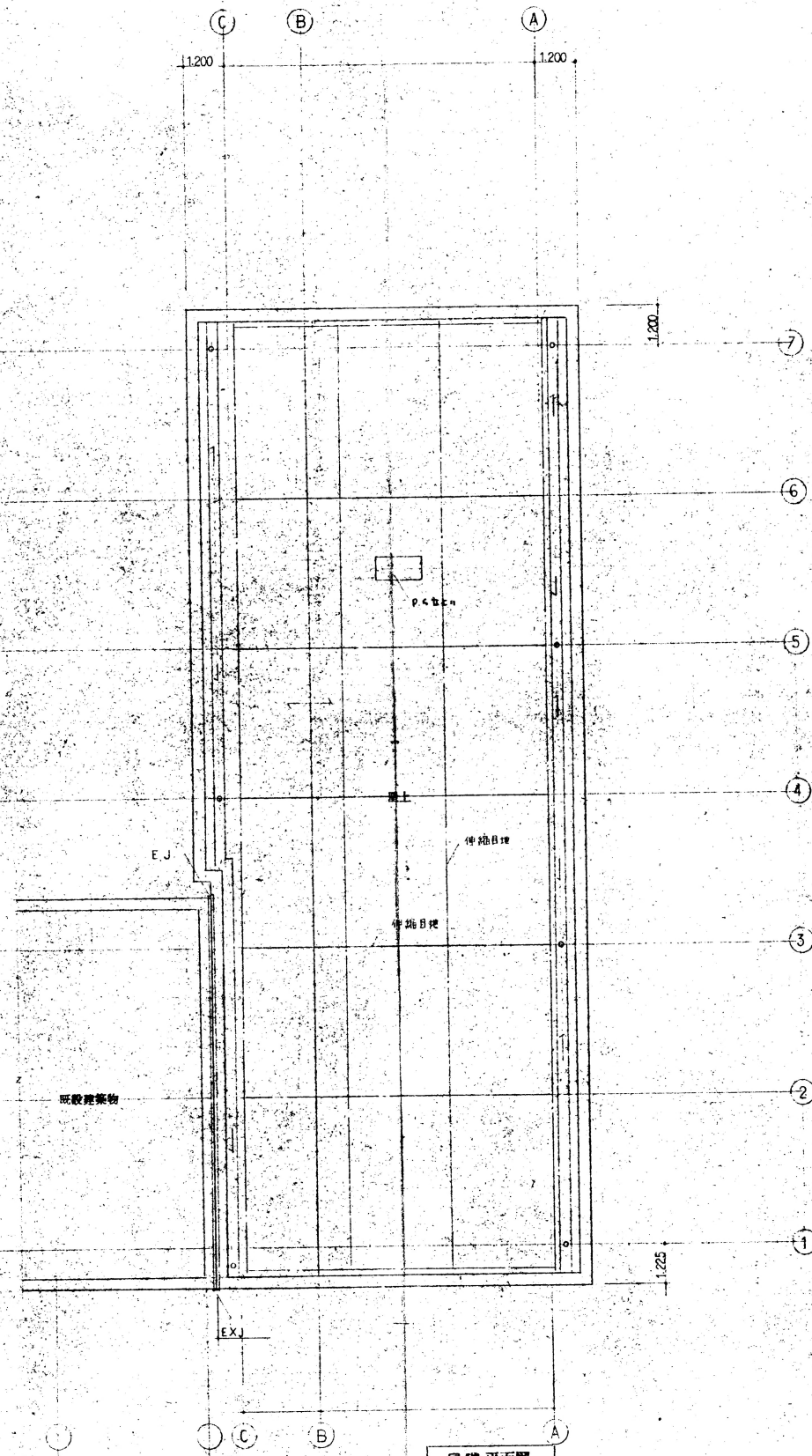
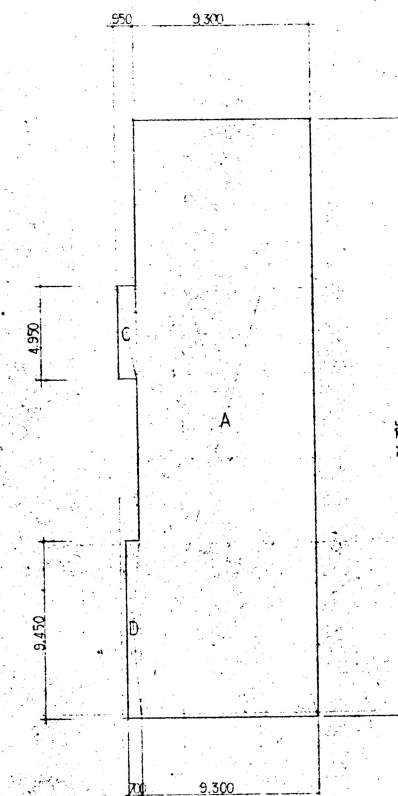


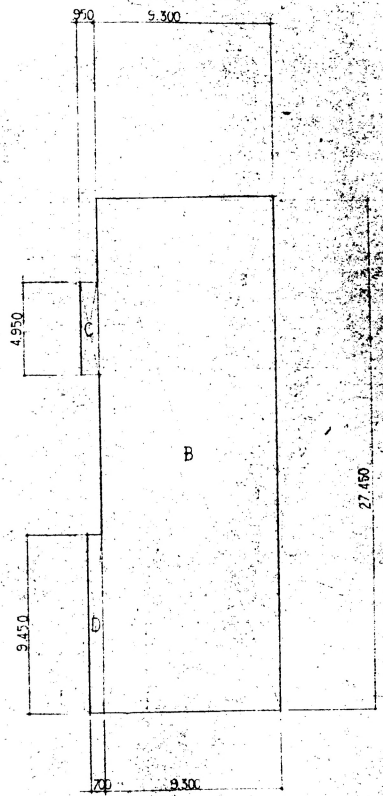
4 階平面図



基礎平面図



1 階平面図



2, 3, 4 階平面図

A	9.300 × 31.725 = 295.04	B	9.300 × 27.450 = 255.29
C	4.950 × 0.950 = 4.70	C	4.70
D	9.450 × 0.700 = 6.62	D	6.62
計	306.36	計	276.61